

FRENCH GRAIN PRODUCTION : A GOOD QUALITY FOR 2015

CARACTERISTICS OF THE 2015 FRENCH PRODUCTION

The **2015 milling wheat** is characterized by an excellent test weight (90% of the French wheat exceed 78 kg/hl), a very good Hagberg Index (>220s), a rather average protein content of 11%, a good level of baking strength and a good and rather homogeneous bread making behavior. Out of 40.7 Mt of milling wheat harvested in summer 2015, 19.6 Mt are Premium or Superior quality. Low ash content (1.53 %) and high 1 000 Kernel weight (45.1 g) indicate a good milling value of French milling wheat. (**Table 1**).

The **2015 durum wheat harvest** is characterized by a good protein content (13,2%), a good test weight (more than 80kg/hl for 72% of the wheat) and a very good “yellow index” (41.8 in average, with 100% of the harvest above 39). (**Table 2**).

**Table 1 : Quality of
French Milling Wheat /
2015 crop**

MILLING WHEAT	Harvest 2015
Humidity (H2O)	12.8
Test weight	78
Protein (% dry matter)	11
W baking strength	173
P/L	0.98
Wet gluten %	20.7
Gluten Index	83
1 000 Kernel Weight g	45.1
Ash content %	1.53

**Table 2 : Quality of
French Durum Wheat /
2015 crop**

DURUM WHEAT	Harvest 2015
Humidity (H2O)	11.7
Test weight	79
Protein (% dry matter)	13,2
Dark smudge	1.5
Yellowness index	41.8
Brownness index	36

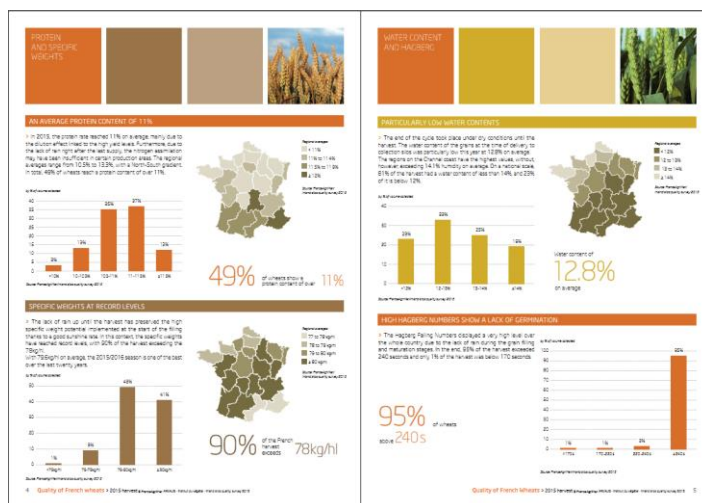
The **2015 barley** harvest concludes with a positive signal on quality for all uses, brewery, human food and animal feed.

All those assets will match most demands from our customers.

THE 2015 FRENCH QUALITY



A survey was carried out jointly by Arvalis (technical Institute) and FranceAgriMer (French Ministry of Agriculture) on samples collected of milling wheat and durum. The results are published in different languages and give a global quality picture of the harvest for each cereal production.



Here is the link to access the online version for Milling Wheat :

http://franceexportcereales.org/wp-content/uploads/2015/06/Qualite_des_bles_fran%C3%A7ais_ANGLAIS_octobre_2015.pdf

Here is the link to access the online version for Durum Wheat :

http://franceexportcereales.org/wp-content/uploads/2015/06/Qualite_des_bles_durs_fran%C3%A7ais_septembre_2015.pdf

“France Export Céréales” (FEC), is a non profit organization, founded in 1997 as an initiative of grain producers (wheat, other cereals & maize). It promotes French cereals and the French cereal sector on export markets and provides information to their members on current and future needs of France’s export customers, so that they can adjust French offer to specific requirements, and capture new markets.